

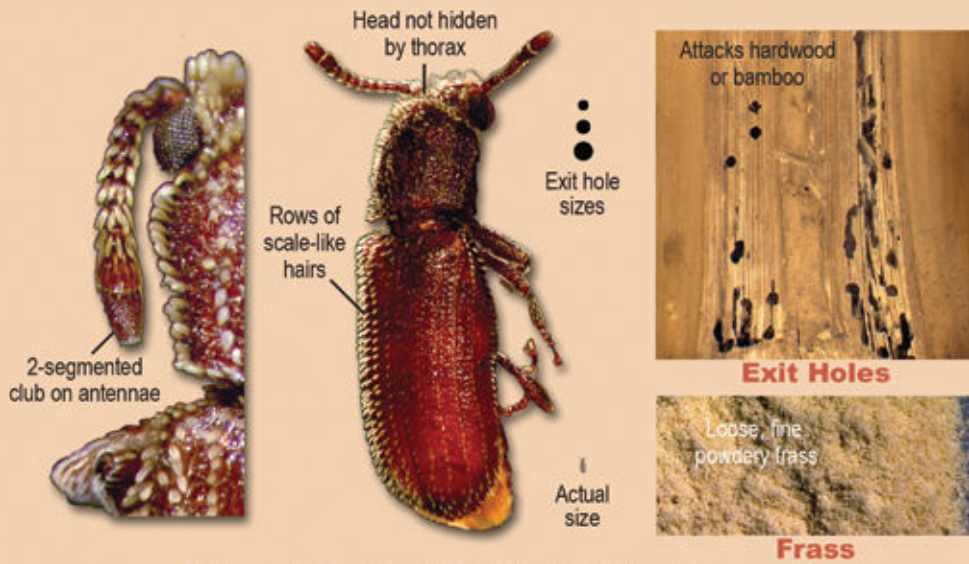
Wood-Destroying Insect Identification Guide



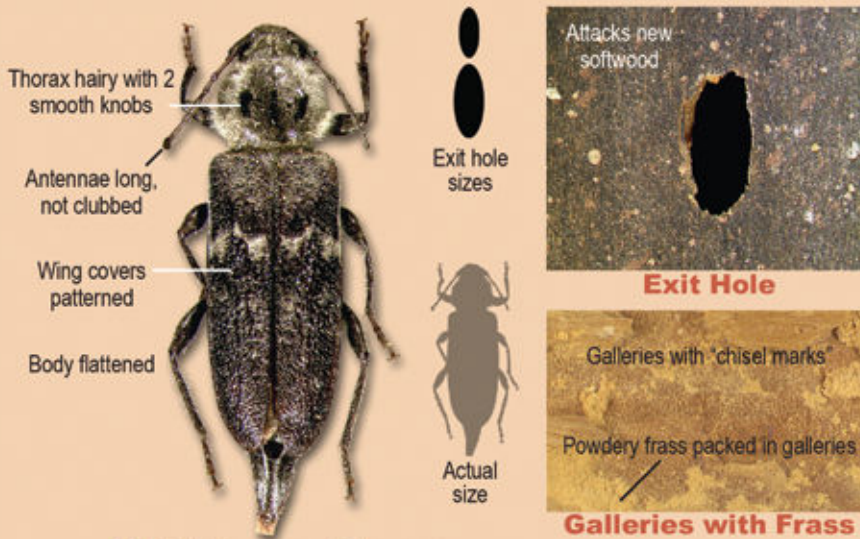
www.NACHI.org

Become a WDO-Certified Inspector at
nachi.org/wdocourse

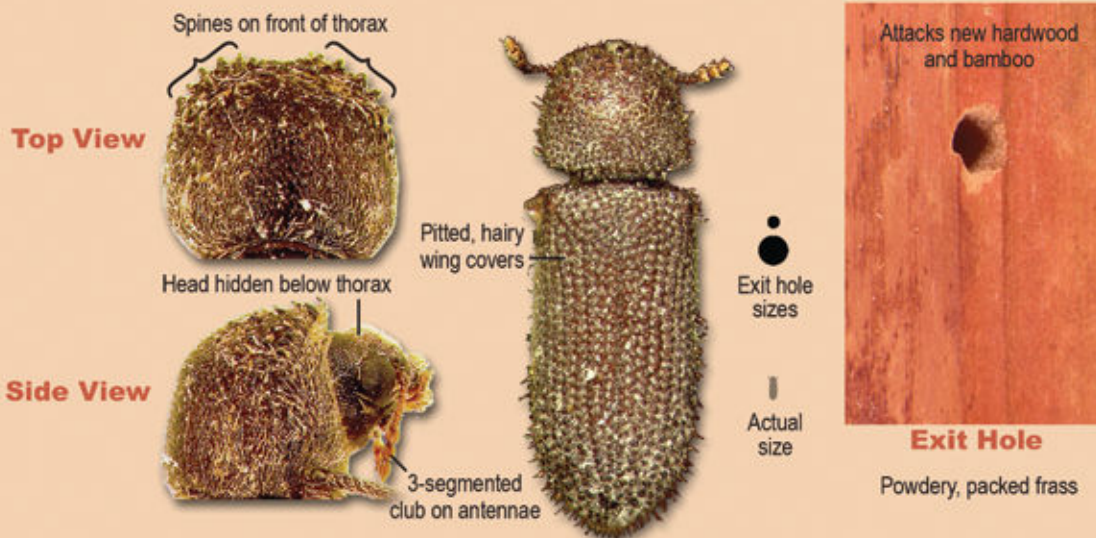
Beetles Found in Dead Wood



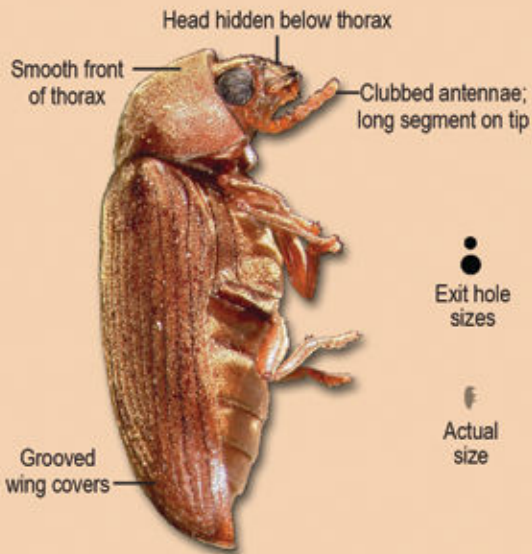
True Powderpost Beetles
Lyctidae



Old House Borer
Cerambycidae



False Powderpost Beetles
Bostrichidae



Exit Holes

● ●
Exit hole sizes

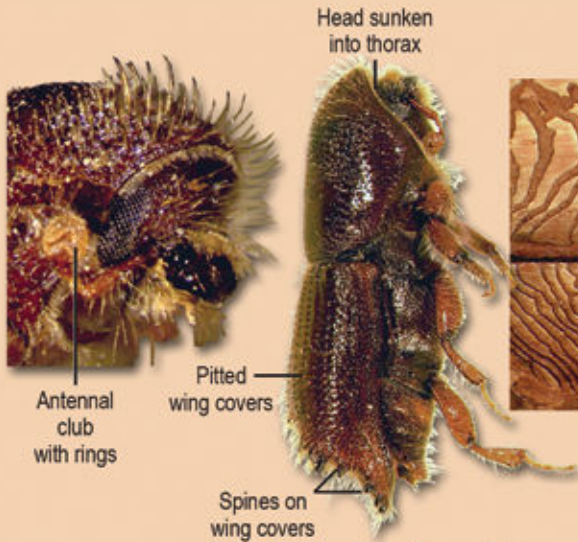
f
Actual size



Frass

Deathwatch Beetles
Anobiidae

Beetles Found in Live Wood



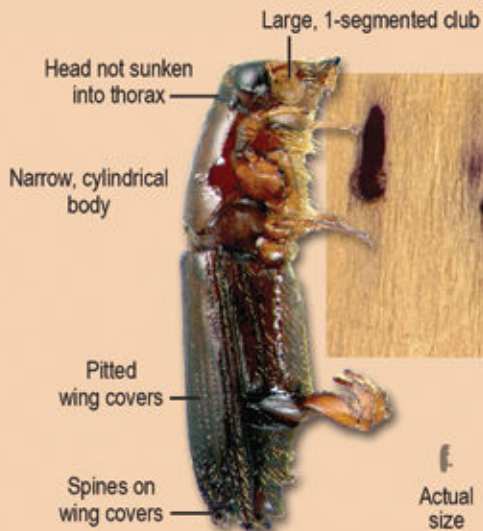
Engraved galleries under bark

Galleries

f
Actual size

● ●
Exit hole sizes

Engraver Beetles
Scolytidae



Stained galleries in wood

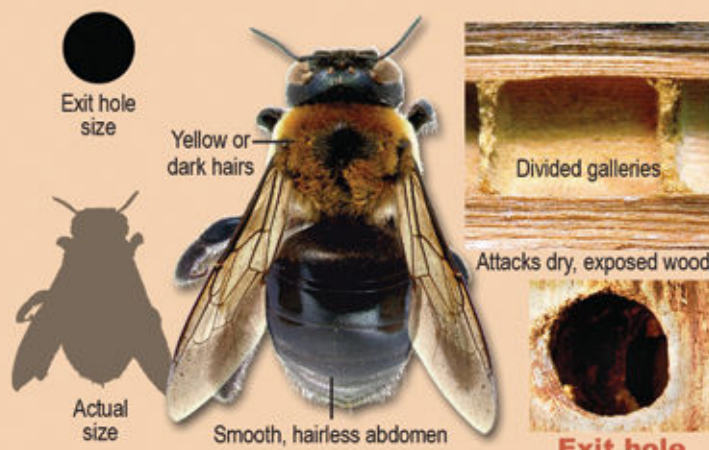
Galleries

f
Actual size

● ●
Exit hole sizes

Ambrosia Beetles
Platypodidae

Other Insects in Wood



Exit hole size

Yellow or dark hairs

Actual size

Smooth, hairless abdomen

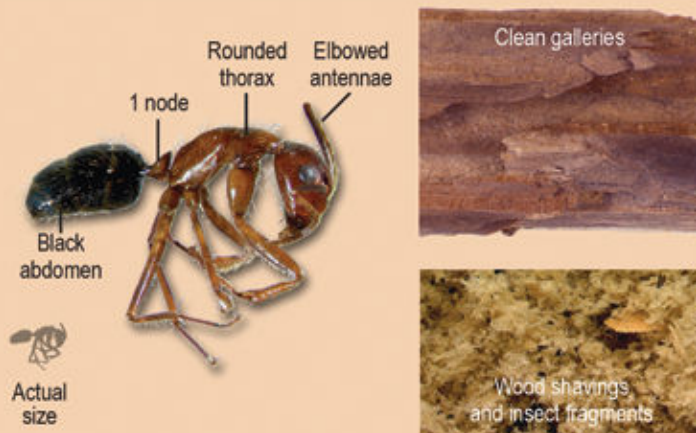
Divided galleries

Attacks dry, exposed wood

Exit hole

Carpenter Bees
Xylocopa

Detailed description: This section illustrates the Carpenter Bee. It features a large central illustration of the bee with labels for its 'Yellow or dark hairs' and 'Smooth, hairless abdomen'. To the left, a black circle indicates the 'Exit hole size', and a silhouette shows the 'Actual size'. To the right, two photographs show wood damage: 'Divided galleries' and an 'Exit hole'. A note states it 'Attacks dry, exposed wood'.



Rounded thorax

Elbowed antennae

1 node

Black abdomen

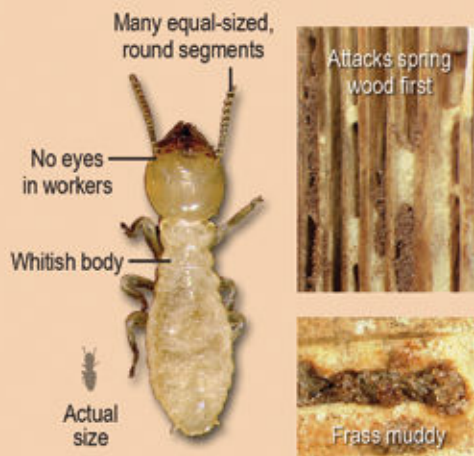
Actual size

Clean galleries

Wood shavings and insect fragments

Carpenter Ants
Camponotus

Detailed description: This section illustrates the Carpenter Ant. It features a central illustration of the ant with labels for its 'Rounded thorax', 'Elbowed antennae', '1 node', and 'Black abdomen'. A small silhouette to the left indicates 'Actual size'. To the right, two photographs show wood damage: 'Clean galleries' and 'Wood shavings and insect fragments'.



Many equal-sized, round segments

No eyes in workers

Whitish body

Actual size

Attacks spring wood first

Fras muddy

Termites
Isoptera

Detailed description: This section illustrates the Termite. It features a central illustration of a termite with labels for 'Many equal-sized, round segments', 'No eyes in workers', and 'Whitish body'. A small silhouette to the left indicates 'Actual size'. To the right, two photographs show wood damage: 'Attacks spring wood first' and 'Fras muddy'.



Complete our WDO course at nachi.org/wdocourse